



**Finella Botes**  
082 600 9530  
finella.botes@seeff.com



**Kim Bendall Bailey**  
083 448 2632  
kim.bailey@seeff.com

Contact **Waterfront**

**021 4255970**

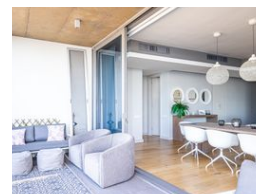
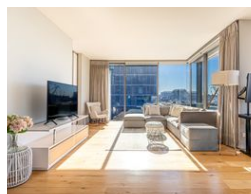
Ratcatchers Building  
W Quay Rd  
Victoria & Alfred Waterfront  
Cape Town  
8001

FEATURED



SOLE MANDATE

Web Ref RLS982974



**R12,995,000**

**Monthly Bond Repayment** R131,929.00

Calculated over 20 years at 10.75% with no deposit.

**Transfer Costs** R1,327,202.00 **Bond Costs** R99,035.00

These calculations are only a guide. Please ask your conveyancer for exact calculations.

**Monthly Levy** R8,048.7 **Monthly Rates** R5,788



2



2.5

### LUXURY SILO LIFESTYLE OVERLOOKING THE HARBOUR

Exclusively listed by us.

This luxurious 2-bedroom corner apartment boasts high ceilings, an abundance of natural light, and a spacious open-plan layout that seamlessly connects the lounge, dining, and kitchen areas. A large, sun-drenched terrace extends from the living space, perfect for indoor-outdoor entertaining.

Features include:

- + 2 En-suite bedrooms with carpeted floors and tiled bathrooms
- + Master bathroom offers a shower, bath, toilet and double basins plus a heated towel rail.
- + Second bathroom includes a shower, single basin and toilet
- + Guest cloakroom
- + Open plan living areas with centralised air-conditioning/heating throughout
- + Solid wooden oggie flooring
- + White modern kitchen with a gas hob and Bosch kitchen appliances
- + Perfectly positioned to capture the warm sunshine, ensuring light streams through the...

### Features

**Pets Allowed** Yes

#### Interior

Bedrooms 2  
Bathrooms 2.5  
Kitchens 1  
Recep. Rooms 2  
Furnished Yes

#### Exterior

Carports / Parkings 2  
Security Yes  
Pool Yes  
Views True

#### Sizes

Land Size 152m<sup>2</sup>

