



Finella Botes
082 600 9530
finella.botes@seeff.com

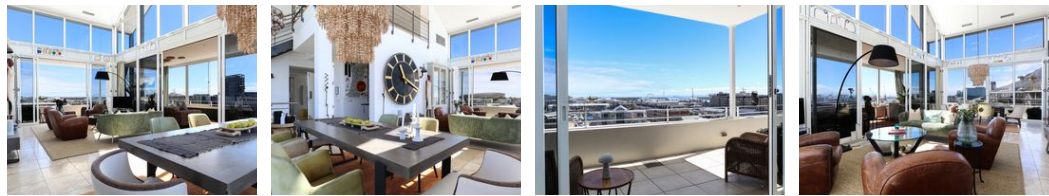


Kim Bendall Bailey
083 448 2632
kim.bailey@seeff.com

Contact Waterfront

021 4255970

Ratcatchers Building
W Quay Rd
Victoria & Alfred Waterfront
Cape Town
8001



R34,950,000

3 3.5

Monthly Bond Repayment R360,749.84
Calculated over 20 years at 11% with no deposit.

Transfer Costs R4,215,871.00 **Bond Costs** R132,285.00
These calculations are only a guide. Please ask your conveyancer for exact calculations.

Monthly Levy R20,302 **Monthly Rates** R14,836

ELEVATED LUXURY: A PENTHOUSE WITH UNMATCHED 360° VIEWS

3 Bedrooms | 3.5 Bathrooms | 3 Parking Bays | Storeroom | 357 sqm

An impeccably positioned duplex penthouse that boasts spacious open-plan living, private terraces, and soaring volumes, all framed by breathtaking panoramic views. Spanning 357 sqm this exceptional residence is a sanctuary of style, luxury and an unbeatable location.

Property features include:

- 3 spacious bedrooms, each with its own en-suite bathroom. The master suite is privately positioned upstairs, while the two additional bedrooms are situated on the lower level.
- Double-volume living area is framed by floor-to-ceiling windows, perfectly capturing the most magnificent views of Iconic -Table Mountain, harbour and vibrant city.
- The open-plan living and dining areas flow seamlessly onto a spacious glass-enclosed patio, creating the perfect harmony between...

Features

Pets Allowed Yes

Interior
Bedrooms 3
Bathrooms 3.5
Kitchens 1
Recep. Rooms 2
Furnished No

Exterior
Carports / Parkings 3
Security Yes
Pool Yes
Views True

Sizes
Floor Size 357m²