



Finella Botes
082 600 9530
finella.botes@seeff.com



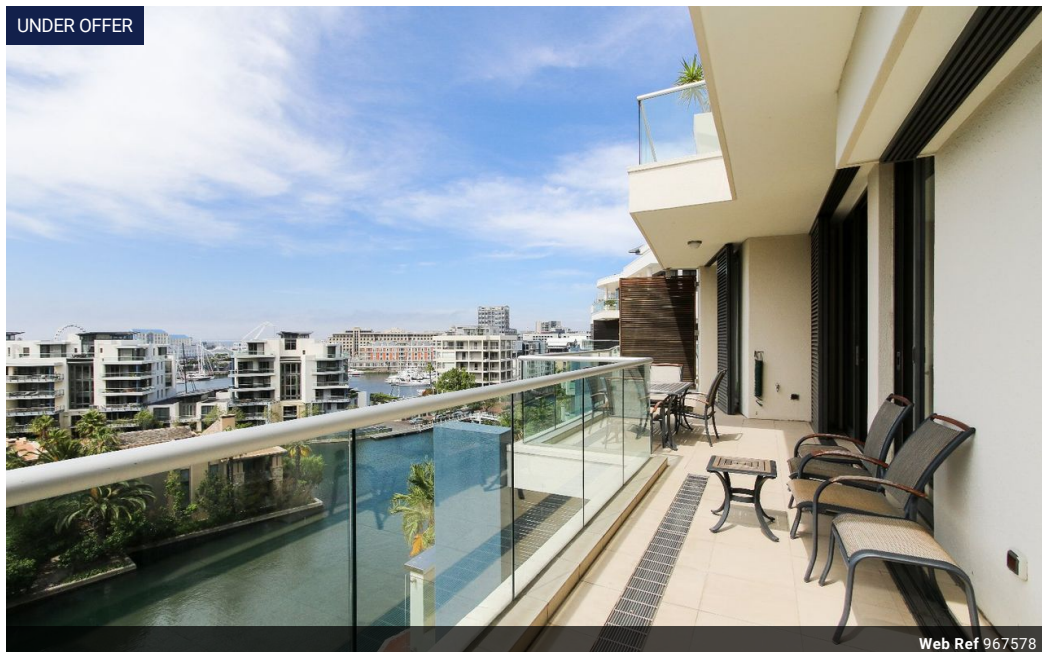
Kim Bendall Bailey
083 448 2632
kim.bailey@seeff.com

Contact Waterfront

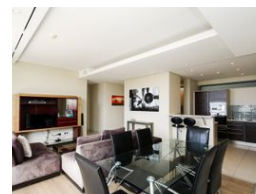
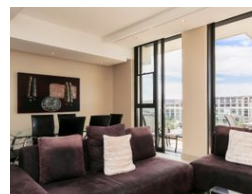
021 4255970

Ratcatchers Building
W Quay Rd
Victoria & Alfred Waterfront
Cape Town
8001

UNDER OFFER



Web Ref 967578



R15,252,000

Monthly Bond Repayment R154,842.72

Calculated over 20 years at 10.75% with no deposit.

Transfer Costs R1,627,819.00 **Bond Costs** R108,535.00

These calculations are only a guide. Please ask your conveyancer for exact calculations.

Monthly Levy R7,100 **Monthly Rates** R4,700



2



2.5

Elevated Position With Spectacular Views

Asking Price R13 500 000 plus VAT

Boasting views, light and position. It's not often an elevated apartment in a sought after building becomes available so seize this unique opportunity to own this ideal lock up and go property which is popular for short term letting.

Features include:

- + 2 front facing en-suite bedrooms
- + Master bedroom enjoys a large full bathroom. Both bathrooms include underfloor heating and a heated towel rail
- + Aluminum shutters off each bedroom allows for extra privacy
- + Laminate flooring throughout with tiled areas in the living room and bathrooms
- + High ceilings with sliding doors throughout brings in plenty of light and sunshine
- + Open plan spacious kitchen overlooks the dining room and lounge that includes integrated appliances
- + Separate scullery
- + Guest cloak room
- + Ducted air-conditioning
- + Open...

Features

Interior

Bedrooms	2
Bathrooms	2.5
Kitchens	1
Recep. Rooms	2
Furnished	No

Exterior

Carports / Parkings	2
Security	Yes
Pool	Yes
Views	True

Sizes

Floor Size	146m ²
Land Size	146m ²

