



Kim Bendall Bailey
083 448 2632
kim.bailey@seeff.com

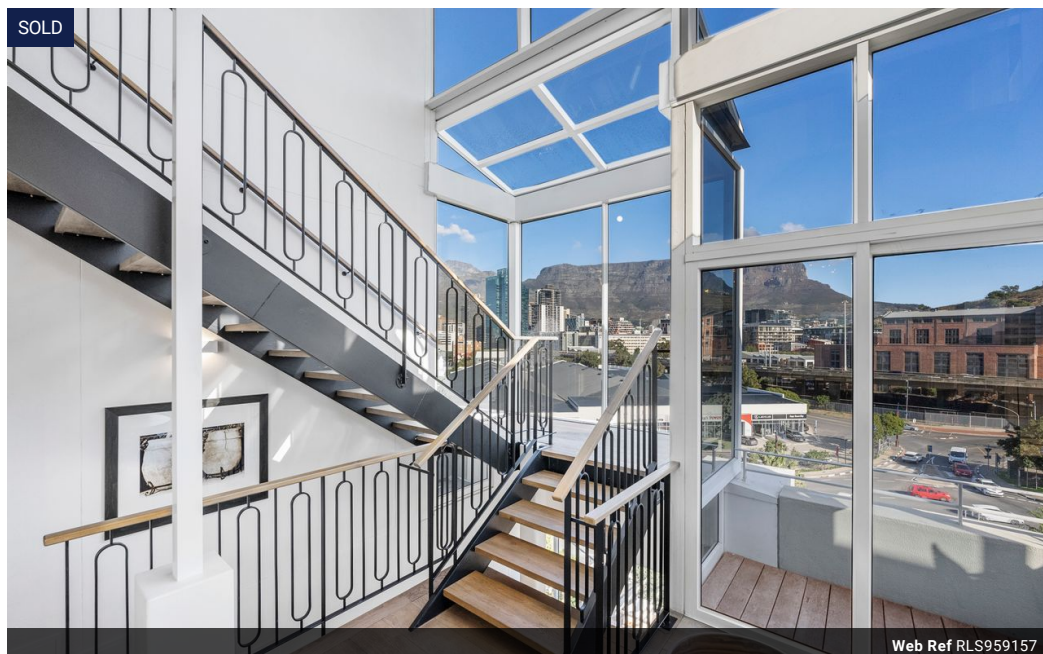


Finella Botes
082 600 9530
finella.botes@seeff.com

Contact **Waterfront**

021 4255970

Ratcatchers Building
W Quay Rd
Victoria & Alfred Waterfront
Cape Town
8001



R39,995,000

3 3

Monthly Bond Repayment R412,823.75

Calculated over 20 years at 11% with no deposit.

Transfer Costs R4,871,721.00 **Bond Costs** R132,285.00

These calculations are only a guide. Please ask your conveyancer for exact calculations.

Monthly Rates R17,213.0

360 Degree Views

Impressively positioned duplex penthouse offering magnificent views. Elegantly renovated with quality finishes throughout, offering free-flowing areas that lead outdoors from all reception areas and bedrooms.

Features include:

- + 3 bedrooms, 3 en-suite bathrooms. Master is upstairs and 2 are situated downstairs
- + Double volume living area with floor to ceiling windows that capture the most magnificent table mountain and town views
- + Open plan kitchen, dining and kitchen that flows out to a large decked covered balcony with views across the canal and silos
- + Direct lift access which allows for extra security and privacy
- + Sophisticated modern white kitchen, with ample cupboard space that include soft closing draws. Designed to accommodate a double door fridge
- + Additional hot water geyser situated under the sink in the...

Features

Interior

Bedrooms	3
Bathrooms	3
Kitchens	1
Recep. Rooms	2
Studies	1
Furnished	No

Exterior

Carports / Parkings	3
Security	Yes
Pool	Yes
Views	True

Sizes

Floor Size	341m²
------------	-------