



Kim Bendall Bailey
083 448 2632
kim.bailey@seeff.com



Finella Botes
082 600 9530
finella.botes@seeff.com

Contact **Waterfront**

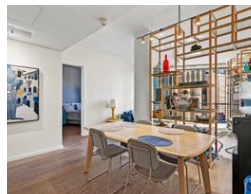
021 4255970

Ratcatchers Building
W Quay Rd
Victoria & Alfred Waterfront
Cape Town
8001



SOLE MANDATE

Web Ref RLS957223



R9,995,000

2 2.5

Monthly Bond Repayment R101,472.13

Calculated over 20 years at 10.75% with no deposit.

Transfer Costs R980,126.00 **Bond Costs** R84,785.00

These calculations are only a guide. Please ask your conveyancer for exact calculations.

Monthly Rates R4,183.1

Elevated Position

View By Appointment Only

EXCLUSIVELY LISTED BY US!

This elevated and fully furnished 2 bedroom apartment is well appointed, offering views over the Silos and courtyard.

Features include:

- + 2 Beds with 2 en-suite bathrooms plus a guest cloakroom
- + Modern bathrooms with the main including a bath
- + Blinds and curtains in both bedrooms
- + Price includes the designer furniture by Moooi Interior design company
- + Modern white kitchen with integrated SMEG appliances, including a gas hob
- + Central air and heating system
- + Oggie flooring throughout
- + 2 undercover parking bays
- + Fibre available in the building
- + Roof top pool and braai area
- + Pets allowed with approval

Features

Pets Allowed Yes

Interior

| | |
|--------------|-----|
| Bedrooms | 2 |
| Bathrooms | 2.5 |
| Kitchens | 1 |
| Recep. Rooms | 2 |
| Furnished | Yes |

Exterior

| | |
|---------------------|------|
| Carports / Parkings | 2 |
| Security | Yes |
| Pool | Yes |
| Views | True |

Sizes

| | |
|------------|-------|
| Floor Size | 100m² |
|------------|-------|

