



Kim Bendall Bailey
083 448 2632
kim.bailey@seeff.com



Finella Botes
082 600 9530
finella.botes@seeff.com

Contact **Waterfront**

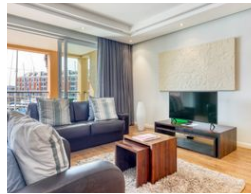
021 4255970

Ratcatchers Building
W Quay Rd
Victoria & Alfred Waterfront
Cape Town
8001

UNDER OFFER



Web Ref RLS941792



R13,995,000



Monthly Bond Repayment R142,081.29

Calculated over 20 years at 10.75% with no deposit.

Transfer Costs R1,456,364.00 **Bond Costs** R103,785.00

These calculations are only a guide. Please ask your conveyancer for exact calculations.

Monthly Levy R5,072.1 **Monthly Rates** R5,276.1

Front Yacht Basin Beauty

View By Appointment Only

EXCLUSIVELY LISTED BY US!

Spacious apartment offering an open plan living area, which flows out to a covered private balcony, that overlooks the front yacht basin. Ideal opportunity to keep the floor plan as it is or add value by utilizing the approved plans to convert the property into a 2 bedroom apartment.

Features include:

- + 1 bedroom with an en-suite full bathroom that includes a bath/shower, double basin, toilet and bidet
- + Wooden laminate flooring in the living area, tiled kitchen and bathroom with a carpeted bedroom
- + Open plan kitchen which includes integrated fridge/freezer and dishwasher, washing machine and tumble dryer
- + Ample cupboard space in the kitchen and bedroom
- + Sliding doors open out to a very private covered balcony.
- + Exceptional front yacht basin views
- + Ducted...

Features

Pets Allowed		Yes			
Interior		Exterior		Sizes	
Bedrooms	1	Carports / Parkings	1	Floor Size	120m²
Bathrooms	1	Security	Yes		
Kitchens	1	Pool	Yes		
Recep. Rooms	2	Views	True		
Furnished	No				

