



Kim Bendall Bailey
083 448 2632
kim.bailey@seeff.com

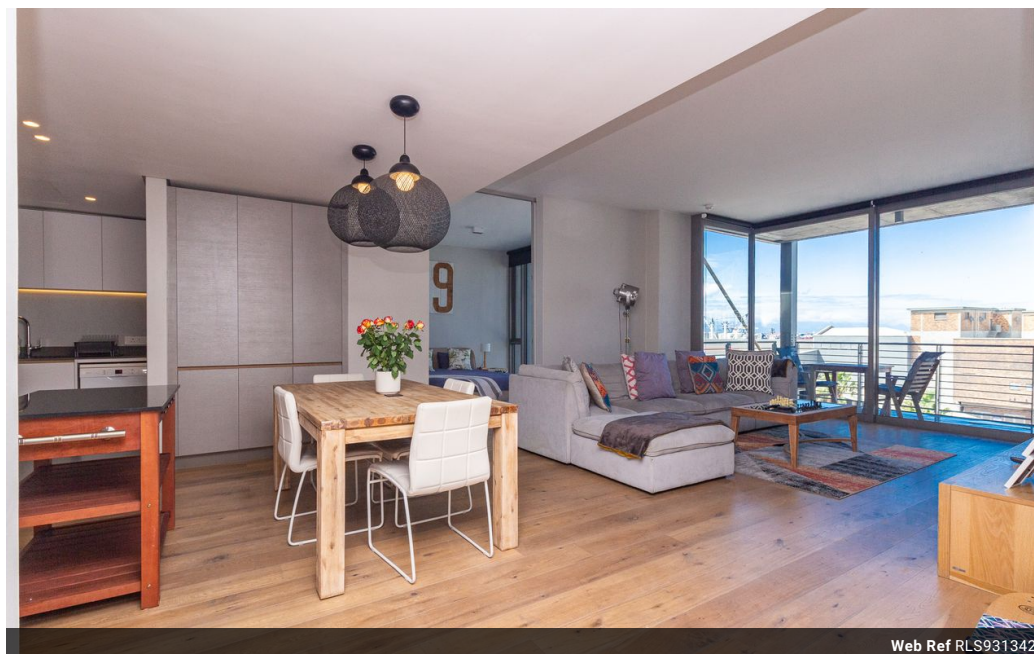


Finella Botes
082 600 9530
finella.botes@seeff.com

Contact Waterfront

021 4255970

Ratcatchers Building
W Quay Rd
Victoria & Alfred Waterfront
Cape Town
8001



Web Ref RLS931342



R8,995,000



2



2.5

Monthly Bond Repayment R91,319.84

Calculated over 20 years at 10.75% with no deposit.

Transfer Costs R864,664.00 **Bond Costs** R80,035.00

These calculations are only a guide. Please ask your conveyancer for exact calculations.

Monthly Levy R6,463.1 **Monthly Rates** R5,500

Boasting Table Mountain Views

Beautifully appointed and well elevated apartment in the exciting Silo precinct of the V&A Waterfront and only a few minutes walk from some incredible restaurants, V&A Waterfront Shopping Centre and the popular Zeitz MOCAA Museum.

Features Include:

- Two Spacious bedrooms en suite with incredible views . Both bedrooms have access to the balcony
- Kitchen is open plan and contemporary and open plan with ample cupboard space. This includes Bosch fridge, washer/dryer combo and dishwasher and Smeg oven and gas hob.
- Ample size balcony with great views
- Guest bathroom
- 60Mbs uncapped fibre line
- Centralised aircon and heating
- 2 underground secure parking bays
- 24 hour security and concierge and biometric access
- Communal rooftop swimming swimming pool & barbecue area with incredible views
- 5 star green rated building
- ...

Features

Interior

Bedrooms	2
Bathrooms	2.5
Kitchens	1
Recep. Rooms	2
Furnished	No

Exterior

Carports / Parkings	2
Security	Yes
Pool	Yes
Views	True

Sizes

Floor Size	110m²
------------	-------

