



Hilary Biccari
083 251 2233
hilary@seeff.com



Lolly Unterslak
082 452 0905

lolly.unterslak@seeff.com

Contact Sea Point

021 4349175

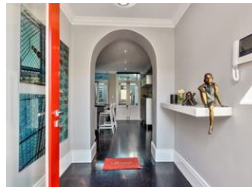
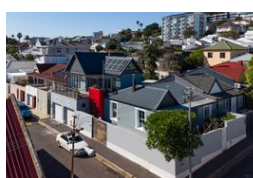
Medical Centre
1 Kloof Rd
Sea Point
Cape Town
8005

UNDER OFFER



SOLE MANDATE

Web Ref RLS983308



R9,450,000

3 2.5 2

Monthly Bond Repayment R95,939.14

Calculated over 20 years at 10.75% with no deposit.

Transfer Costs R920,176.00 **Bond Costs** R84,785.00

These calculations are only a guide. Please ask your conveyancer for exact calculations.

Monthly Rates R4,200

A Home With Soul!

EXCLUSIVE SOLE MANDATE - ERF SIZE: 259 SQM

This striking sanctuary offers more than just good looks, it tells a story. A graceful blend of heritage features and contemporary design, its warm, sunny and full of personality. From stained glass windows to solar panels, its where olde-world charm meets modern living. High ceilings with original wooden floors and natural light pouring through sash windows, this abode is thoughtfully curated throughout with an instantly inviting ambience.

Downstairs level comprises:

- Master bedroom, en-suite bathroom leading onto a quaint courtyard
- Modern kitchen also opens onto the courtyard
- Spacious lounge and separate dining room share a wood burning fireplace
- Lounge flows onto the protected patio and pool.
- Guest cloakroom
- Double garage with direct access
- Wine cellar

Mezzanine...

Features

Pets Allowed Yes

Interior
Bedrooms 3
Bathrooms 2.5
Kitchens 1
Recep. Rooms 2
Furnished No

Exterior
Garages 2
Security No
Pool Yes
Views False

Sizes
Land Size 259m²

