



**Finella Botes**  
082 600 9530  
finella.botes@seeff.com



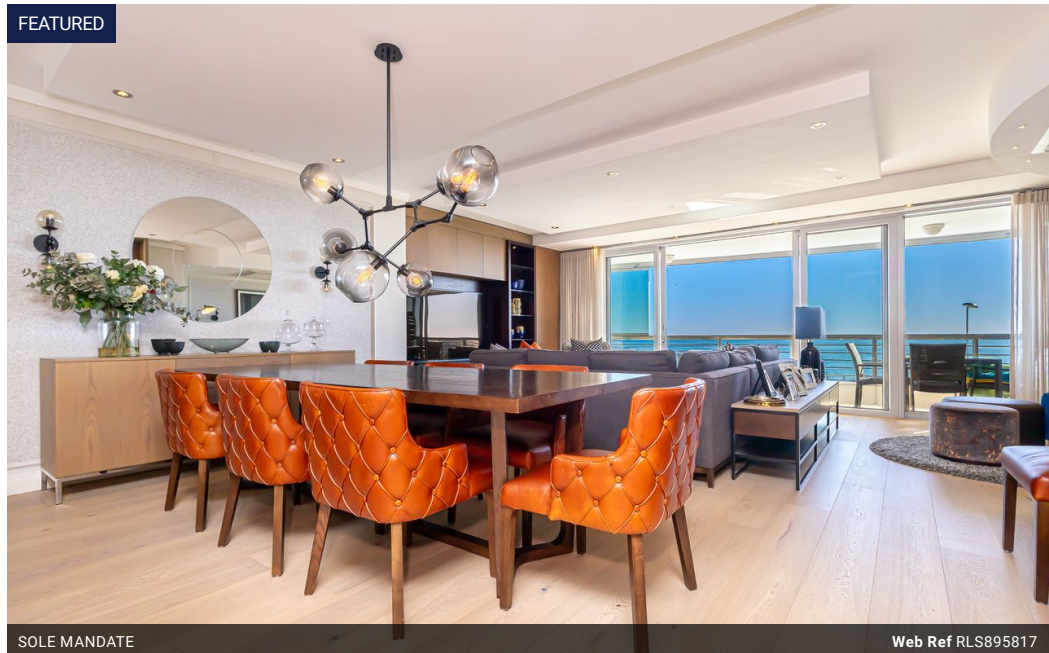
**Kim Bendall Bailey**  
083 448 2632  
kim.bailey@seeff.com

Contact Waterfront

021 4255970

Ratcatchers Building  
W Quay Rd  
Victoria & Alfred Waterfront  
Cape Town  
8001

### FEATURED



SOLE MANDATE

Web Ref RLS895817



## R17,995,000



**Monthly Bond Repayment** R182,690.45

Calculated over 20 years at 10.75% with no deposit.

**Transfer Costs** R2,000,796.00 **Bond Costs** R122,785.00

These calculations are only a guide. Please ask your conveyancer for exact calculations.

**Monthly Levy** R8,938.5 **Monthly Rates** R9,253.5

### Sought After Aquarius

View By Appointment Only

Exclusively Listed by Seeff.

This elegant apartment is filled with character providing classic features such as wooden flooring and high standard built in cabinetry. The stylish living areas is offering a fantastic open plan entertaining space. Flowing seamlessly from the reception areas is an enclosed balcony with frameless glass which can either be left open so you can enjoy sunny days out on your terrace or close them so your furniture is cared for on bad weather days. The modern kitchen is aligned with quality finishes and plenty of cupboard space with top notch appliances and separate scullery area. All three bedrooms are en-suite, 2 of which are sea facing and include special features such as wall paper and wooden flooring. Air-conditioning throughout plus an inverter as well as a guest...

### Features

**Pets Allowed** Yes

#### Interior

|              |     |
|--------------|-----|
| Bedrooms     | 3   |
| Bathrooms    | 3.5 |
| Kitchens     | 1   |
| Recep. Rooms | 2   |
| Studies      | 1   |
| Furnished    | No  |

#### Exterior

|                     |      |
|---------------------|------|
| Carports / Parkings | 2    |
| Security            | Yes  |
| Pool                | Yes  |
| Views               | True |

#### Sizes

|            |                   |
|------------|-------------------|
| Floor Size | 210m <sup>2</sup> |
|------------|-------------------|

