



Finella Botes
082 600 9530
finella.botes@seeff.com



Kim Bendall Bailey
083 448 2632
kim.bailey@seeff.com

Contact Waterfront

021 4255970

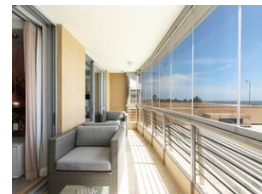
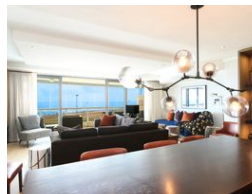
Ratcatchers Building
W Quay Rd
Victoria & Alfred Waterfront
Cape Town
8001

FEATURED



SOLE MANDATE

Web Ref RLS895817



R17,995,000

3 3.5

Monthly Bond Repayment R185,742.30

Calculated over 20 years at 11% with no deposit.

Transfer Costs R2,000,796.00 **Bond Costs** R122,785.00

These calculations are only a guide. Please ask your conveyancer for exact calculations.

Monthly Levy R8,938.5 **Monthly Rates** R9,253.5

Sought After Aquarius

View By Appointment Only

Exclusively Listed by Seeff.

This elegant apartment is filled with character providing classic features such as wooden flooring and high standard built in cabinetry. The stylish living areas is offering a fantastic open plan entertaining space. Flowing seamlessly from the reception areas is an enclosed balcony with frameless glass which can either be left open so you can enjoy sunny days out on your terrace or close them so your furniture is cared for on bad weather days. The modern kitchen is aligned with quality finishes and plenty of cupboard space with top notch appliances and separate scullery area. All three bedrooms are en-suite, 2 of which are sea facing and include special features such as wall paper and wooden flooring. Air-conditioning throughout plus an inverter as well as a guest...

Features

Pets Allowed Yes

Interior

Bedrooms	3
Bathrooms	3.5
Kitchens	1
Recep. Rooms	2
Studies	1
Furnished	No

Exterior

Carports / Parkings	2
Security	Yes
Pool	Yes
Views	True

Sizes

Floor Size	210m ²
------------	-------------------

