



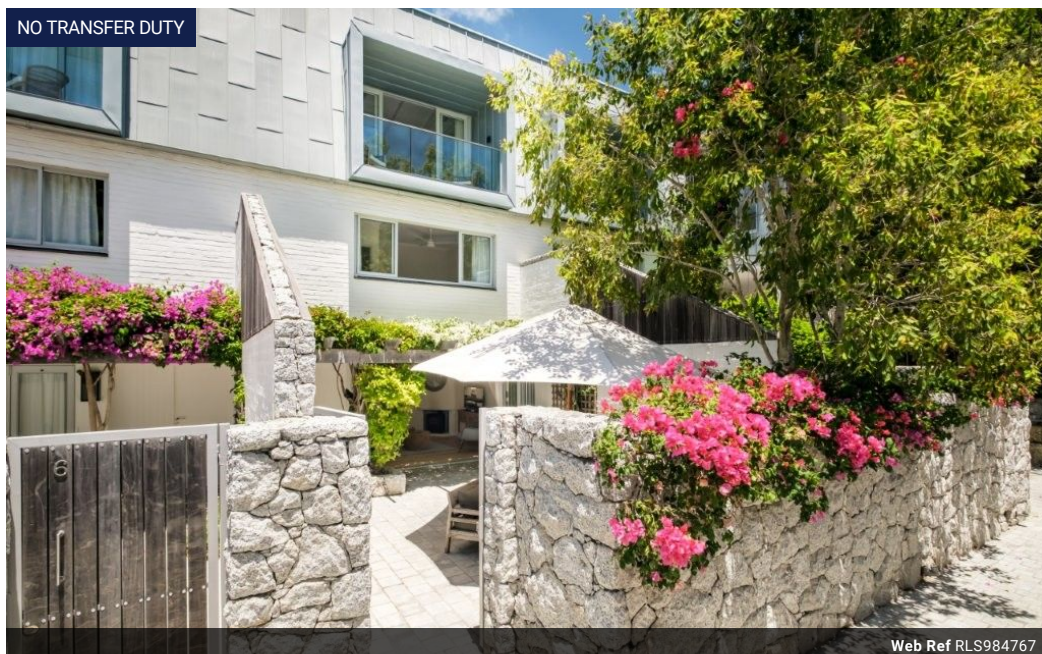
**Suzy Davies**  
072 902 1604  
suzy.davies@seeff.com

Contact City Bowl &  
Tamboerskloof

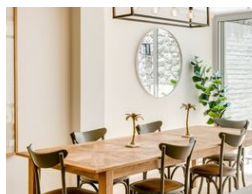
021 4239146

Unit 64, Palmhof Centre, 24 Union St,  
Gardens, Cape Town, 8001

NO TRANSFER DUTY



Web Ref RLS984767



**R14,560,000**

 4  4

**Monthly Bond Repayment** R147,817.34

Calculated over 20 years at 10.75% with no deposit.

**Transfer Costs** R1,535,277.00 **Bond Costs** R108,535.00

These calculations are only a guide. Please ask your conveyancer for exact calculations.

**Monthly Levy** R3,333 **Monthly Rates** R5,833

Unparalleled Condo Living in The Heart of Higgovale

ON SHOW BY APPOINTMENT | 27 JULY 2025

Eight elegant triplex condos are situated just behind the resort-style pool, offering a sophisticated blend of comfort and contemporary design. These residences welcome you through a gorgeous pergolas-covered courtyard, leading to an open-plan living area that seamlessly combines the lounge, dining room, and modern kitchen. This level also features a standalone bedroom with an adjacent bathroom, providing a private and stylish space, ideal for accommodating guests.

The upper two levels feature spacious bedrooms and sleek, modern bathrooms. Some bedrooms open onto balconies that showcase unrivaled views of Lion's Head, creating a tranquil retreat where natural beauty and thoughtful design come together.

### Features

#### Interior

Bedrooms	4
Bathrooms	4
Kitchens	1
Recep. Rooms	2
Furnished	No

#### Exterior

Carports / Parkings	2
Security	Yes
Pool	Yes
Views	True

#### Sizes

Floor Size	241m²
------------	-------