



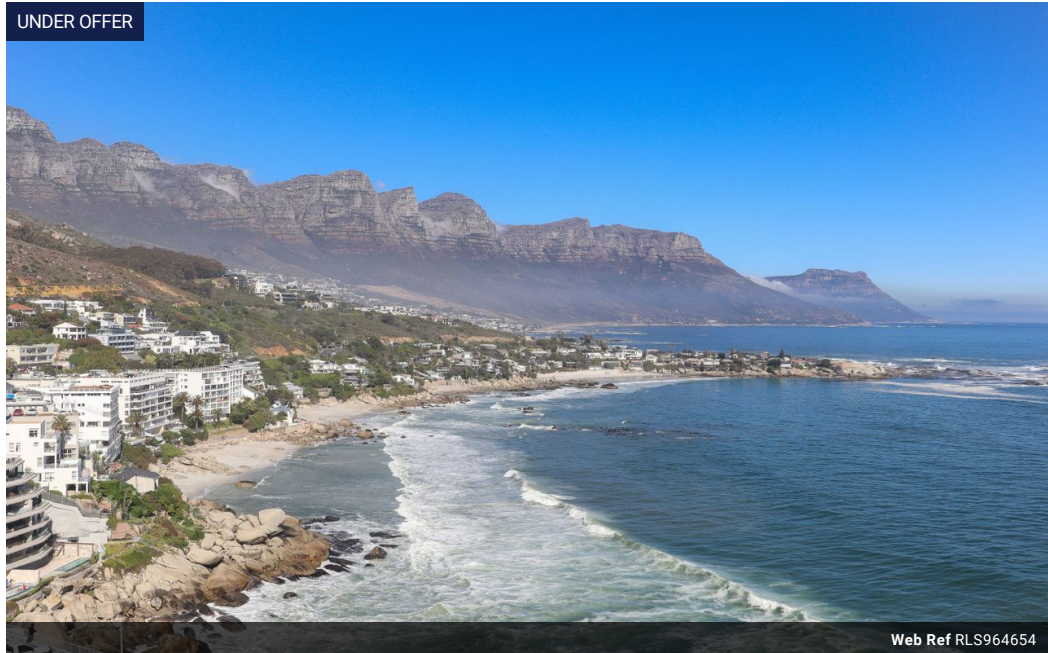
Jo Lombard
083 281 2732
jo.lombard@seeff.com

Contact **Sea Point**

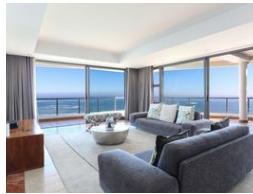
021 4349175

Medical Centre
1 Kloof Rd
Sea Point
Cape Town
8005

UNDER OFFER



Web Ref RLS964654



R22,950,000

 3  2

Monthly Bond Repayment R236,887.24

Calculated over 20 years at 11% with no deposit.

Transfer Costs R2,655,871.00 **Bond Costs** R132,285.00

These calculations are only a guide. Please ask your conveyancer for exact calculations.

Monthly Levy R16,200 **Monthly Rates** R13,000

Elevated Clifton Living

Exclusive Joint Mandate /

Located in the sought-after suburb of Clifton, this spacious single level apartment offers views all round and great potential to add value. The property is located on the 6th floor and offers 3 spacious bedrooms, 2 bathrooms, a large kitchen with an impressive view of the twelve apostles mountain range, open-plan living and dining areas that flow out onto an expansive outside entertainment area with an amazing 180 degree view of the ocean.

As an added bonus, the apartment comes with two parking bays, back-up power, and the apartment block offers 24 hour security.

Apartments like this one don't come around too often - a great opportunity not to be missed!

Features

Pets Allowed Yes

Interior

Bedrooms	3
Bathrooms	2
Kitchens	1
Recep. Rooms	2
Furnished	No

Exterior

Carports / Parkings	2
Security	Yes
Pool	No
Views	True

Sizes

Floor Size	312m²
------------	-------