



Suzy Davies
072 902 1604
suzy.davies@seeff.com

Contact City Bowl &
Tamboerskloof

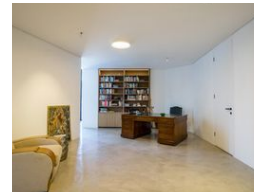
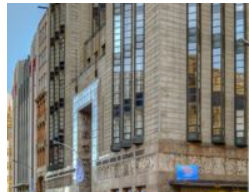
021 4239146

Unit 64, Palmhof Centre, 24 Union St,
Gardens, Cape Town, 8001

FEATURED



Web Ref RLS971055



R12,500,000

2 2.5

Monthly Bond Repayment R126,903.62

Calculated over 20 years at 10.75% with no deposit.

Transfer Costs R1,272,752.00 **Bond Costs** R99,035.00

These calculations are only a guide. Please ask your conveyancer for exact calculations.

Monthly Levy R14,490 **Monthly Rates** R3,980

Elegant Penthouse Apartment

ICONIC MUTUAL HEIGHTS

This stylish and expansive 265m² two-bedroom penthouse in the iconic Mutual Heights building offers a blend of luxury and historical charm in the heart of Cape Town. Boasting panoramic views of Table Mountain and the cityscape, it features spacious double-volume ceilings, an open-plan entertainment area, and a modern floating staircase leading to the upper level, where both bedrooms have en-suite bathrooms.

Filled with natural light, the penthouse includes a private sauna, excellent 24/7 security with biometric access and convenient on-site amenities like a gym and secure parking with lift access. The building is also exempt from load shedding, ensuring uninterrupted comfort and convenience.

Features

Pets Allowed Yes

Interior

Bedrooms	2
Bathrooms	2.5
Kitchens	1
Recep. Rooms	2
Furnished	No

Exterior

Carports / Parkings	2
Security	Yes
Pool	No
Views	True

Sizes

Floor Size	265m ²
------------	-------------------