



Warren Emett
082 749 7166
warren.emett@seeff.com

Contact City Bowl &
Tamboerskloof

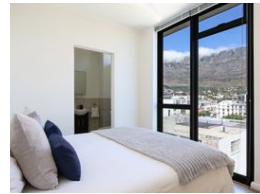
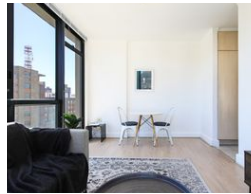
021 4239146

Unit 64, Palmhof Centre, 24 Union St,
Gardens, Cape Town, 8001



SOLE MANDATE

Web Ref RLS956274



R2,350,000

1 1

Monthly Bond Repayment R23,857.88

Calculated over 20 years at 10.75% with no deposit.

Transfer Costs R101,552.00 **Bond Costs** R36,530.00

These calculations are only a guide. Please ask your conveyancer for exact calculations.

Monthly Levy R850 **Monthly Rates** R650

Sunny Corner Unit with Magnificent Mountain & City Views

THE PERFECT AIRBNB UNIT

Exclusive Mandate

Situated high with the most breathtaking Lions Head and Table Mountain views, this stunning corner unit just has it all! Spacious, north west facing lounge/living area with panoramic views from all around. Large floor to ceiling sliding glass doors allowing for loads of natural light.

Thoughtful, clever allocation of space that maximises the entire layout. Compact functional kitchen that leads to cozy dining area where the breathtaking views can be admired too. Bedroom faces Table Mountain. En suite bathroom with large walk in shower.

Unbelievable short term/Airbnb rental returns. The property is super popular and nearly always occupied.

Located in the popular East City precinct, surrounded by trendy coffee shops, eateries and fashion boutiques. Five minutes from Gardens...

Features

Interior

| | |
|--------------|----|
| Bedrooms | 1 |
| Bathrooms | 1 |
| Kitchens | 1 |
| Recep. Rooms | 1 |
| Furnished | No |

Exterior

| | |
|---------------------|------|
| Carports / Parkings | 1 |
| Security | Yes |
| Pool | Yes |
| Views | True |

Sizes

| | |
|------------|------------------|
| Floor Size | 41m ² |
|------------|------------------|