



Edith Marsh
083 654 2168
edith.marsh@seeff.com



Nadine Jocum
072 230 1947

nadine.jocum@seeff.com

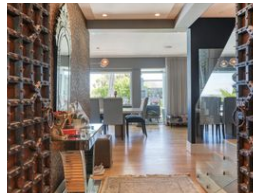
Contact Camps Bay

021 4381055

Shop No. 4 Central Parade
Victoria Road
Camps Bay



Web Ref RLS973711



R34,995,000

Monthly Bond Repayment R361,214.33
Calculated over 20 years at 11% with no deposit.

Transfer Costs R4,221,721.00 **Bond Costs** R132,285.00

These calculations are only a guide. Please ask your conveyancer for exact calculations.

Monthly Rates R9,109.3

6 6.5 2

Luxurious Bespoke Villa Near The Beach!!

Stroll to the secluded Bakoven beaches from this villa ideally situated on the seaside of the road for privacy and tranquility.

Enter this magnificent home through unique double doors and a spectacular Koi pond design feature.

The spacious living area with large textured wall & TV display unit is the focal point and leads to 12 seater dining room. Top Chef's kitchen including top of the range large gas stove and 2 eye-level ovens. All perfect for indoor/outdoor entertainment, undercover terrace for all year-round magnificent sunsets and large enough for lounging and alfresco dining. Or lounge around the pool, barbeque and level child-friendly garden. All while enjoying the sea views and sounds of nature.

Ultra luxurious main bedroom en-suite and dressing room, huge patio encapsulating the sea views, a delight to wake up...

Features

Pets Allowed Yes

Interior

Bedrooms	6
Bathrooms	6.5
Kitchens	1
Recep. Rooms	2
Studies	1
Furnished	No

Exterior

Garages	2
Security	Yes
Dom. Accom.	1
Pool	Yes
Views	True

Sizes

Land Size	595m ²
-----------	-------------------