



Edith Marsh
083 654 2168
edith.marsh@seeff.com



Lyn Pope
082 575 1999
lyn@seeff.com

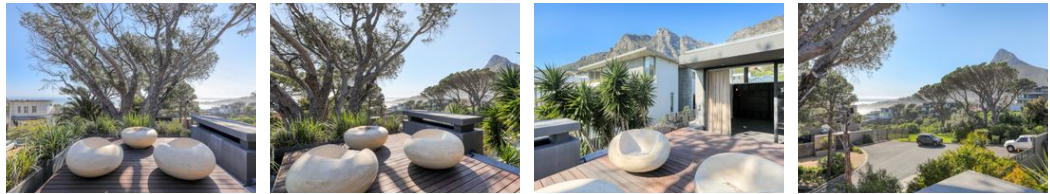
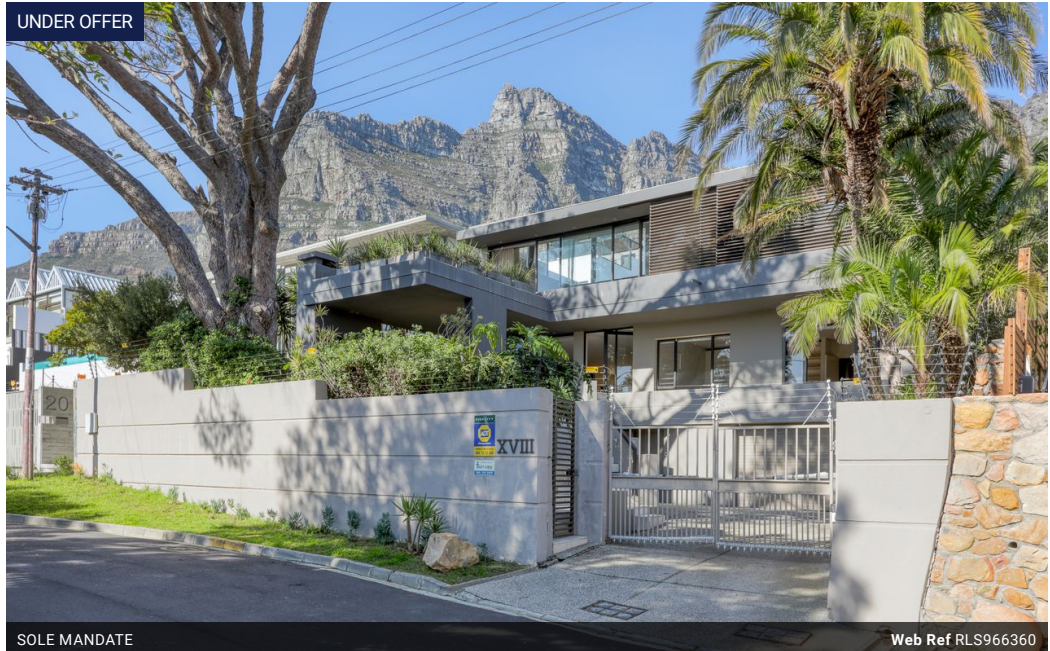


Jackie Clarke
060 996 6124
jackie.c@seeff.com

Contact Camps Bay

021 4381055

Shop No. 4 Central Parade
Victoria Road
Camps Bay



R15,950,000

3 3.5 2

Monthly Bond Repayment R164,634.05
Calculated over 20 years at 11% with no deposit.

Transfer Costs R1,724,021.00 **Bond Costs** R113,285.00
These calculations are only a guide. Please ask your conveyancer for exact calculations.

Monthly Rates R7,599

Contemporary Camps Bay Home

Exclusive Sole Mandate

Nestled in a sought-after tree lined cul-de-sac with access to the Little Glen in Camps Bay, this contemporary tranquil family friendly home offers modern spacious open-plan living with fireplace and easy flow out to covered entertainment terrace perfect for alfresco dining. Fitted kitchen with double oven, gas hob and breakfast bar.

On the top floor and accessed via a striking open rise cantilever metal staircase, the ultra-spacious feature double volume main bedroom, luxuriously en-suite with study area leads out to an outdoor patio with spectacular mountain and sea views.

Two further bedrooms on the main floor both luxuriously en-suite. The family room overlooking the pool has a fireplace, murphy bed and fitted tv unit perfect for movie nights plus a guest cloaks. Water saving Jojo tanks,...

Features

Pets Allowed Yes

Interior
Bedrooms 3
Bathrooms 3.5
Kitchens 1
Recep. Rooms 2
Studies 1
Furnished No

Exterior
Garages 2
Security Yes
Dom. Accom. 1
Pool Yes
Views True

Sizes
Floor Size 421m²
Land Size 744m²

Extras
Intercom Solar Panels Inverter Burglar Bars Alarm System Electric Fencing Garden Sprinkler System