



Lyn Pope
082 575 1999
lyn@seeff.com



Edith Marsh
083 654 2168
edith.marsh@seeff.com



Jackie Clarke
060 996 6124
jackie.c@seeff.com

Contact Camps Bay

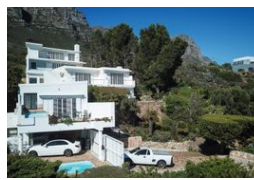
021 4381055

Shop No. 4 Central Parade
Victoria Road
Camps Bay



SOLE MANDATE

Web Ref RLS897730



R95,000,000

Monthly Bond Repayment R980,578.97
Calculated over 20 years at 11% with no deposit.

Transfer Costs R12,022,371.00 **Bond Costs** R132,285.00

These calculations are only a guide. Please ask your conveyancer for exact calculations.

Monthly Rates R10,897

4 6.5

One Of The Finest View Sites In Camps Bay!

EXCLUSIVE SOLE MANDATE

UNIQUE PEACEFUL SETTING ON THE SLOPES OF TABLE MOUNTAIN NATIONAL PARK

The ultimate double-storey "Penthouse", magical double-storey "Villa" & gorgeous "Studio" surrounded by nature, is waiting for the privileged buyer.

Boasting a special merge of spectacular sweeping views of Camps Bay's iconic palm-fringed sandy white beach, sparkling Atlantic Ocean & majestic mountain views from Twelve Apostles to Lions Head, these three magical units with land offer spacious open-plan living and generous outdoor garden, terrace & pool areas each measuring +400 square metres and surrounded by absolute nature in a tranquil environment & ambiance with private direct access to the mountain reserve.

THIS AMAZING LIFESTYLE COULD BE YOURS.... CALLING ALL NATURE LOVERS!

PRICE EXCLUDES VAT

FEATURES & FACILITIES:
- Remote

Features

Interior		Exterior		Sizes	
Bedrooms	4	Carports / Parkings	3	Land Size	1,293m ²
Bathrooms	6.5	Security	Yes		
Kitchens	2.5	Pool	Yes		
Recep. Rooms	6	Views	True		
Furnished	No				

