

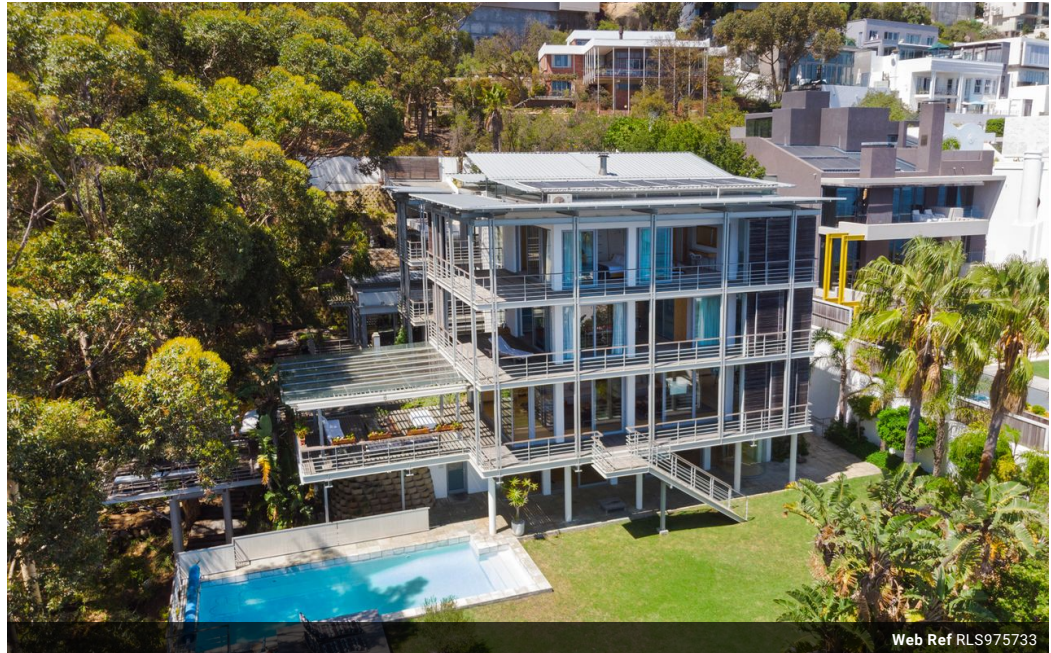


Jo Lombard
083 281 2732
jo.lombard@seeff.com

Contact Sea Point

021 4349175

Medical Centre
1 Kloof Rd
Sea Point
Cape Town
8005



Web Ref RLS975733



R67,000,000

5 5 2

Monthly Bond Repayment R691,566.22
Calculated over 20 years at 11% with no deposit.

Transfer Costs R8,382,371.00 **Bond Costs** R132,285.00

These calculations are only a guide. Please ask your conveyancer for exact calculations.

Monthly Rates R18,000

Architectural masterpiece in Bantry Bay

Strategically sited on the lower slopes of Lion's Head between lush forest and magnificent bay, this unique Bantry Bay creation is the perfect marriage between ocean and forest. A stunning architectural accomplishment, curated by the award winning Van Der Merwe Miszewski Architects.

Creativity abounds in this luxurious space. 5-bedrooms, 5-bathrooms, open-plan lounge, dining, kitchen, study, basement rec. room, dedicated studio and staff quarters are all designed around a triple volume internal glassed void that opens your home to wondrous 360° views. Below - the inspiring and ever-changing Atlantic.

Behind - a timber and steel walkway 8 metres above the ground gives you full exposure to the natural forest that borders the property.

The two primary aspects of the site are the ocean and the forest.

With full-height...

Features

Pets Allowed Yes

Interior
Bedrooms 5
Bathrooms 5
Kitchens 1
Recep. Rooms 2
Studies 1
Furnished No

Exterior
Garages 2
Carports / Parkings 4
Security Yes
Dom. Accom. 2
Pool Yes
Views True

Sizes
Land Size 1,486m²