



Toni Lombard
072 788 1818
toni.lombard@seeff.com



Garreth Gibson
076 544 2156

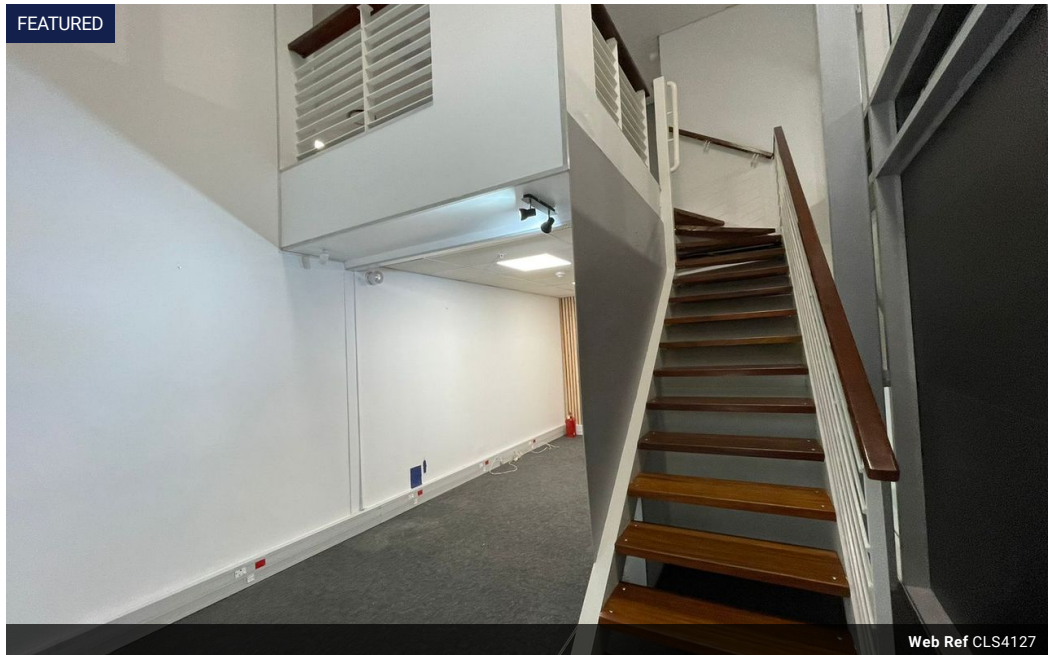
garreth.gibson@seeff.com

Contact City Bowl & Tamboerskloof

021 4239146

Unit 64, Palmhof Centre, 24 Union St, Gardens, Cape Town, 8001

FEATURED



Web Ref CLS4127



R180 per m²

Gross Monthly Rental R15,300 Excl. VAT
Monthly Rates R6,220.8 Excl. VAT

Monthly Levy R57 Excl. VAT

0 0

Charming Office Space for Lease

This neatly presented office space offers a comfortable and professional environment, perfect for businesses looking for convenience and security. Key features include:

- Easy access to modern, well-maintained toilets
 - Fully-functional kitchen area for your convenience
 - 24/7 security ensuring a safe and secure working environment
 - A clean, tidy office that's ready for immediate use
- With its ideal location and excellent amenities, this office is perfect for businesses that want a hassle-free, productive

Features

| | | | |
|-----------------|------------|--------------|------------------|
| Zoning | Commercial | | |
| Exterior | | Sizes | |
| Security | Yes | Floor Size | 85m ² |

